

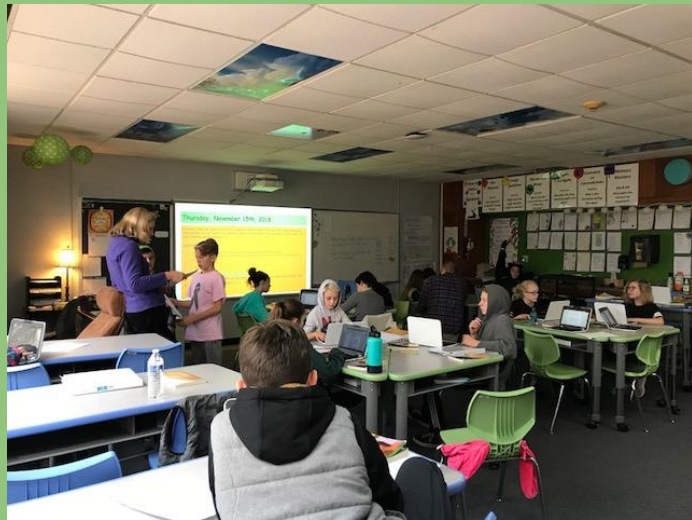


Safe  
Respectful  
Responsible

# CMS School Report November 2018

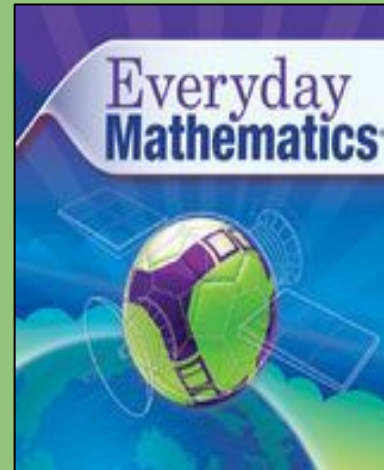
# What's New at CMS

2 Additional Teachers  
class sizes  
from 27/28 to 22/23



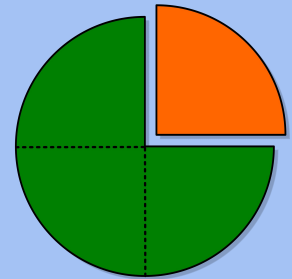
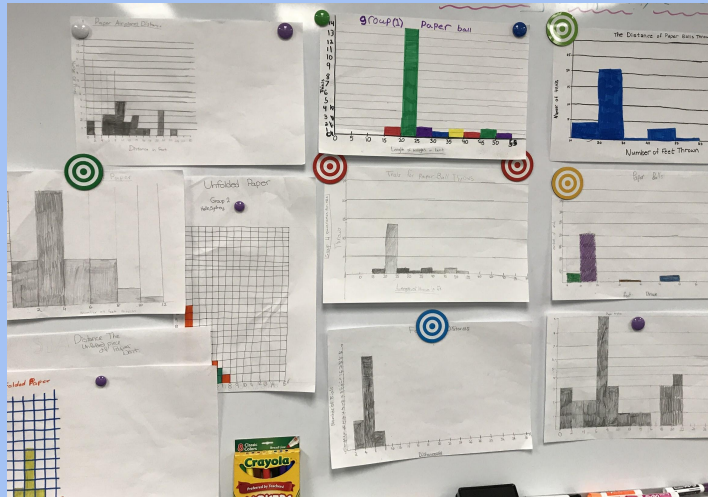
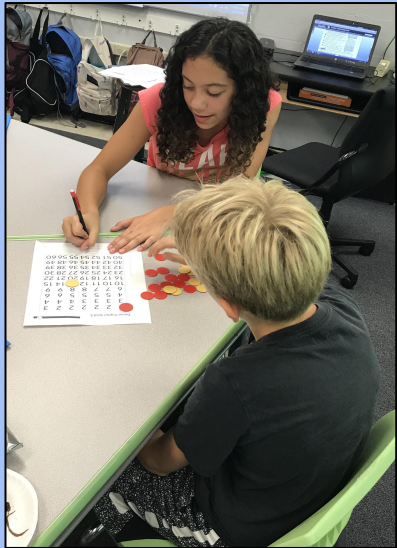
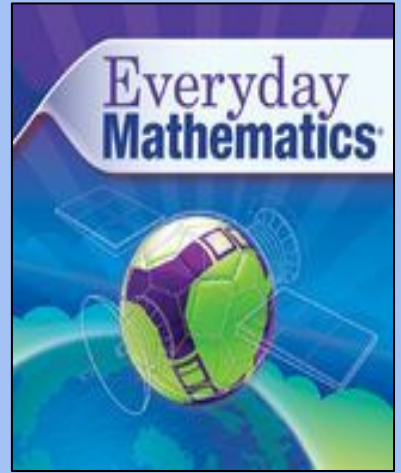
Sixth Grade

New Math Program



# Everyday Mathematics

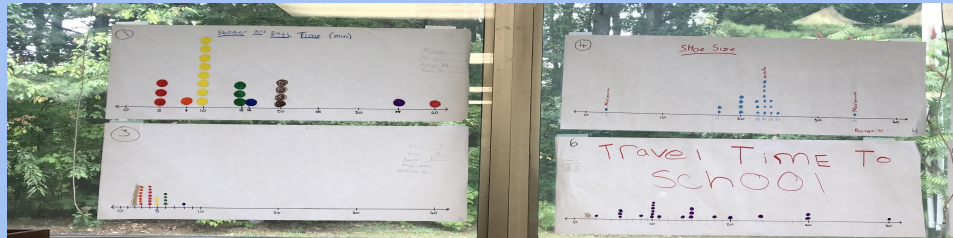
*Best practices in teaching...meeting the need to be responsive to our students*



# Everyday Mathematics

## Why Everyday Math for 6th grade:

- Common Core aligned
- Rigorous
- Regularly **spirals** back to previous learning
- Differentiated
- Online resources
- Engaging and curriculum related **games**
- Real life **problem solving** activities embedded in each unit
- Regular practice of **ongoing learning**
- Eases the transition from MBS to CMS...a bridge of familiarity for the students
- Ease of teaching

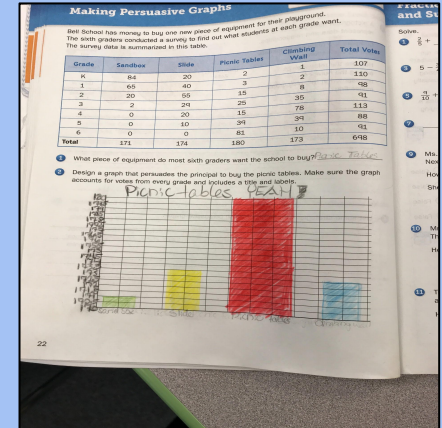


## How the program is delivered:

- Three 1 ½ hour blocks per week (Monday, Wednesday, Friday)
  - New lesson taught
- Two 20-30 minute 'mini-math blocks' per week (Tuesday, Thursday)
  - Time for: reteaching, reviewing, skills practice, computation/basic skills practice, small group intervention work

## Why this model:

- Allows time to **Teach...Assess...Respond**
- Continues the successful MBS 1 ½ hour delivery model
- Continues the SBAC success from MBS
- In line with district initiative of Collaborative data teams - our 6th grade math data team is focusing on benefits of small intervention groups in raising SBAC scores. This model allows us the time for intervention groups while allowing all other students time to practice and enrich concepts and skills



Greet Students at Door  
Do Now - PD and Walks  
Learning Target Posted  
Exit Ticket

Personalized  
Learning

Instructional  
Practices



# Fostering Community Empowering Students Acknowledging Success

Team  
And  
Schoolwide  
Town Meetings



# Enrollment

Average Daily  
Attendance  
96%

Grade Level	Students	Classrooms	Average class size
Grade 6	173 students	8 classrooms	21/22
Grade 7	162 students	6 classrooms	27
Grade 8	160 students	6 classrooms	26/27
Total*	495 students	20 classrooms	

\*Included in this total are 12 students who participate in the Infinity program.



# Demographics

<b>Demographic</b>	<b>Number of students in each demographic</b>	<b>Percentage of total student population</b>
Students receiving Special Education instruction/504 accommodations	93 (59/34)	19%
Students qualifying for subsidized meals	138	28%
English Language Learners	14	3%

# Planning Room Referrals

## \*Discipline Referral - 90/182

(One Category - Discipline 40, T Directed Break 25, Fast Pass 69, Take a Break 48)

With Developmental Designs, Resiliency Training and clarity around Safe, Responsible, Respectful Citizenship Guidelines teachers are handling more discipline in their classrooms. Redirection, Quick Conference, Take a Break In or Out, and greeting students at the door are some of the strategies all teachers are utilizing.

Planning Room works with students who need more time to talk through behaviors or learn strategies for more effectively coping with their emotions and behaviors.

## \*Alternative Work Space - 50/68

# Policy Violations

Drug or weapons violations - 4 (vaping)

Bullying, Hazing, Harassment, Retaliation 36 investigations

- 15 Bullying Findings
- 6 Harassment Findings
- 15 Inappropriate Behavior

# Other Pertinent Data

Child Protection Team - 27

Department of Children and Families - 13

First Call - 10

Other outcomes from a CPT meeting might include calls to parents, police, therapist.

Our Colchester Middle School Mission is  
to create an environment that is...

Developmentally Responsive  
Challenging  
Empowering  
Equitable for All

# Our Focus Areas this Year

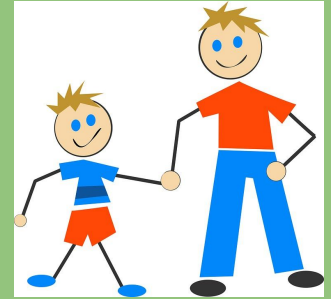
## Proficiency Based Learning (MTSS A)

- Continuing to set the foundational understanding of proficiency practices for all teachers
- Writing scoring guides for each discipline proficiency
- Connecting discipline proficiencies to content units
- Understanding and practicing feedback



# Common Instructional Practices (MTSS A)

- **Greeting Students at the Door**  
(Relationships/Knowing every student)



- **Do Now** (Primes the learning/assesses previous learning)

-  **Learning Target Posted**  
(Clarity of instruction and student understanding)

- **Exit Ticket**  
(the day's lesson)



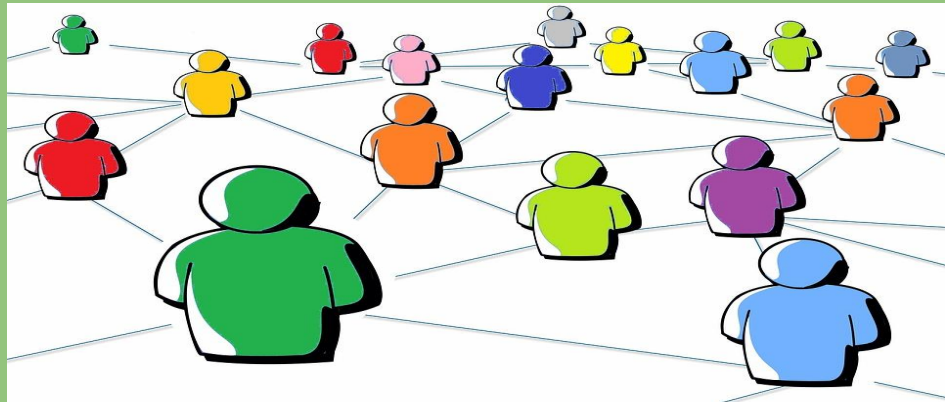
(Assess students' understanding of the day's lesson)

## Resiliency Training (MTSS B)

- *Understanding trauma and its impact on students*
- *Strategies for building resilient classrooms*

## Schoolwide Citizenship Guidelines (MTSS B)

- *Respectful*
- *Responsible*
- *Safe*





# Questions???

